



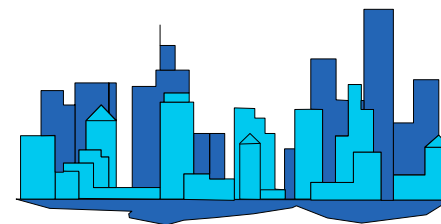
City of Phoenix

Monthly Count Of Actual Offenses Known To Police

Part 1 Crimes

By Uniform Crime Reporting (UCR) Classifications

2008 Calendar Year-To-Date



	JAN	FEB	MAR	1st QTR TOTAL	APR	MAY	JUN	2nd QTR TOTAL	JUL	AUG	SEP	3rd QTR TOTAL	OCT	NOV	DEC	4th QTR TOTAL	2008 YEAR TO DATE TOTAL
	Criminal Homicide	18	14	10	42	15	13	15	43	12	17	11	40	0	0	0	0
a. Murder and Non-Negligent Manslaughter	18	14	10	42	15	13	15	43	12	17	11	40	0	0	0	0	125
b. Manslaughter by Negligence	0	0	0	0	0	0	0	0	0	0	0	0	0	0	0	0	0
Forcible Rape	42	43	41	126	42	35	42	119	54	40	41	135	0	0	0	0	380
a. Rape by Force	34	37	35	106	34	30	35	99	43	33	38	114	0	0	0	0	319
b. Attempts to Commit Forcible Rape	8	6	6	20	8	5	7	20	11	7	3	21	0	0	0	0	61
Robbery	477	380	426	1,283	407	397	337	1,141	401	419	362	1,182	0	0	0	0	3,606
a. Firearm	283	230	255	768	235	207	194	636	205	228	202	635	0	0	0	0	2,039
b. Knife or Cutting Instrument	34	35	30	99	32	36	30	98	39	39	32	110	0	0	0	0	307
c. Other Dangerous Weapon	39	24	28	91	31	32	14	77	29	23	21	73	0	0	0	0	241
d. Strong-Arm (hands, fists, feet, etc.)	121	91	113	325	109	122	99	330	128	129	107	364	0	0	0	0	1,019
Aggravated Assault	413	368	447	1,228	420	452	461	1,333	427	435	460	1,322	0	0	0	0	3,883
Total Violent Crimes	950	805	924	2,679	884	897	855	2,636	894	911	874	2,679	0	0	0	0	7,994
Burglary	1,727	1,552	1,517	4,796	1,591	1,539	1,523	4,653	1,438	1,564	1,596	4,598	0	0	0	0	14,047
a. Forcible Entry	1,140	1,046	1,001	3,187	1,015	988	925	2,928	927	989	1,024	2,940	0	0	0	0	9,055
b. Unlawful Entry - No Force	494	424	426	1,344	484	458	508	1,450	419	492	478	1,389	0	0	0	0	4,183
c. Attempted Forcible Entry	93	82	90	265	92	93	90	275	92	83	94	269	0	0	0	0	809
Larceny - Theft	4,186	3,868	4,314	12,368	4,681	4,156	4,072	12,909	3,912	4,148	3,834	11,894	0	0	0	0	37,171
Motor Vehicle Theft	1,418	1,276	1,429	4,123	1,282	1,472	1,408	4,162	1,437	1,198	1,128	3,763	0	0	0	0	12,048
a. Autos	749	606	727	2,082	622	732	728	2,082	698	532	535	1,765	0	0	0	0	5,929
b. Trucks and Buses	618	619	640	1,877	599	696	630	1,925	673	619	538	1,830	0	0	0	0	5,632
c. Other Vehicles	33	18	29	80	28	23	22	73	31	19	27	77	0	0	0	0	230
d. Motorcycles	18	33	33	84	33	21	28	82	35	28	28	91	0	0	0	0	257
Arson	34	39	39	112	39	39	34	112	40	40	50	130	0	0	0	0	354
Total Property Crimes	7,365	6,735	7,299	21,399	7,593	7,206	7,037	21,836	6,827	6,950	6,608	20,385	0	0	0	0	63,620
TOTAL PART 1 CRIMES	8,315	7,540	8,223	24,078	8,477	8,103	7,892	24,472	7,721	7,861	7,482	23,064	0	0	0	0	71,614

Does not include "Unfounded" cases by UCR definition.



City of Phoenix

Monthly Count Of Actual Offenses Known To Police

Part 2 Crimes

By Uniform Crime Reporting (UCR) Classifications
2008 Calendar Year-To-Date



	JAN	FEB	MAR	1st QTR TOTAL	APR	MAY	JUN	2nd QTR TOTAL	JUL	AUG	SEP	3rd QTR TOTAL	OCT	NOV	DEC	4th QTR TOTAL	2008 YEAR TO DATE TOTAL
Forgery & Counterfeit*	349	342	298	989	272	295	277	844	305	259	266	830	0	0	0	0	2,663
Fraud	925	789	848	2,562	844	766	757	2,367	769	740	714	2,223	0	0	0	0	7,152
Embezzlement	88	58	54	200	78	64	57	199	75	53	67	195	0	0	0	0	594
Stolen Property	49	46	35	130	53	59	45	157	42	44	31	117	0	0	0	0	404
Vandalism	1,461	1,318	1,458	4,237	1,452	1,479	1,396	4,327	1,422	1,321	1,252	3,995	0	0	0	0	12,559
Weapons	78	76	82	236	117	101	95	313	79	98	88	265	0	0	0	0	814
Commercialized Vice	135	55	68	258	106	119	84	309	104	44	101	249	0	0	0	0	816
Sex Offenses	120	93	120	333	153	169	100	422	116	98	129	343	0	0	0	0	1,098
Narcotic Drug Laws	709	689	723	2,121	704	812	721	2,237	650	657	645	1,952	0	0	0	0	6,310
Opium	189	205	226	620	246	309	232	787	211	206	219	636	0	0	0	0	2,043
Marijuana	372	342	351	1,065	308	343	337	988	292	307	288	887	0	0	0	0	2,940
Synthetics	138	139	134	411	132	147	145	424	144	132	131	407	0	0	0	0	1,242
Non-Narcotics	10	3	12	25	18	13	7	38	3	12	7	22	0	0	0	0	85
Gambling	0	0	0	0	0	0	0	0	0	0	0	0	0	0	0	0	0
Bookmaking	0	0	0	0	0	0	0	0	0	0	0	0	0	0	0	0	0
Lottery	0	0	0	0	0	0	0	0	0	0	0	0	0	0	0	0	0
Other Gambling	0	0	0	0	0	0	0	0	0	0	0	0	0	0	0	0	0
Offenses Against Family	44	28	46	118	42	39	57	138	40	51	36	127	0	0	0	0	383
Driving Under Influence*	596	586	601	1,783	565	611	547	1,723	548	508	596	1,652	0	0	0	0	5,158
Liquor Laws	147	127	154	428	173	151	173	497	166	177	174	517	0	0	0	0	1,442
Disorderly Conduct	370	384	404	1,158	441	434	375	1,250	334	367	381	1,082	0	0	0	0	3,490
Vagrancy	68	46	41	155	47	59	31	137	44	31	59	134	0	0	0	0	426
Other (Except Traffic)	586	599	704	1,889	653	698	683	2,034	703	681	664	2,048	0	0	0	0	5,971
All Traffic	218	244	287	749	258	290	267	815	248	251	255	754	0	0	0	0	2,318
Curfew	28	28	32	88	33	26	81	140	117	71	45	233	0	0	0	0	461
Runaways	413	407	485	1,305	428	461	388	1,277	296	327	444	1,067	0	0	0	0	3,649
Misdemeanor Assaults	1,045	1,035	1,122	3,202	1,169	1,285	1,115	3,569	1,166	1,145	1,208	3,519	0	0	0	0	10,290
TOTAL PART 2 CRIMES	7,429	6,950	7,562	21,941	7,588	7,918	7,249	22,755	7,224	6,923	7,155	21,302	0	0	0	0	65,998

Does not include "Unfounded" cases by UCR definition.